

QuickFitting® SurePress® is line of press fittings that visually confirms a pressed connection. Green indication fills windows once pressed, confirming a successful seal. This allows installers and inspectors to quickly identify if a fitting has been pressed prior to pressure testing.

### Features and Benefits

- SurePress® Technology: PRESS-GREEN-GO
- Green indication in windows confirms a pressed connection
- Visible indication up to 5 ft. away
- Quickly identify if fittings are pressed prior to pressure testing
- Lead free materials - safe for potable water
- No heat, flame or Hot Work Permit needed to install
- Compatible with all leading brand hydraulic press tools and jaws
- Limited Lifetime Warranty

### Materials

- Body Construction: Copper
- Sealing Element (O-ring): EPDM

### Performance

- Operating Pressure (Max): 300 psi
- Test/Burst Pressure (Max): 600 psi
- Operating Temperature: 0°F - 250°F

### Pipe Compatibility

- ASTM B88 compliant Type K, L, M copper tubing
  - Hard copper: Nominal sizes 1/2" to 2"
  - Soft copper: Nominal sizes 1/2" to 1-1/4"

### Approved Applications (Services)

Approved for above and below ground applications but requires approval from local inspector prior to installation due to codes and soil conditions.

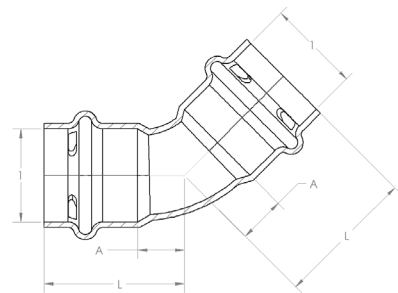
- Hot and cold potable water
- Rainwater/Gray water
- Chilled water
- Residential steam (5 psi maximum)
- Hydronic heating (≤50% ethylene / propylene glycol)

### Listings & Certificates

- IAPMO Listed for IAPMO/ANSI Z1117, NSF/ANSI 61/372
- ICC-ES Evaluated to ICC-ES LC1002
- Commonwealth of Massachusetts (Plumbing)

### Compliant with:

- ASTM B88
- ASTM D2000



### Dimensional Data

Part No.	Size (P x P)			
	1	1	A	L
SPWE11-45R	1/2	1/2	0.32	1.04
SPWE22-45R	3/4	3/4	0.45	1.34
SPWE33-45R	1	1	0.49	1.42
SPWE44-45R	1-1/4	1-1/4	0.53	1.58
SPWE55-45R	1-1/2	1-1/2	0.81	2.10
SPWE66-45R	2	2	0.86	2.46

Fitting Size	Pipe Insertion Depth
1/2"	3/4"
3/4"	1"
1"	1"
1-1/4"	1-1/16"
1-1/2"	1-3/8"
2"	1-1/2"

Item # Submitted	
Job Name	
Date	
Engineer	
Contractor	
PO #	
Tag	



QuickFitting® SurePress® is line of press fittings that visually confirms a pressed connection. Green indication fills windows once pressed, confirming a successful seal. This allows installers and inspectors to quickly identify if a fitting has been pressed prior to pressure testing.

### Features and Benefits

- SurePress® Technology: PRESS-GREEN-GO
- Green indication in windows confirms a pressed connection
- Visible indication up to 5 ft. away
- Quickly identify if fittings are pressed prior to pressure testing
- Lead free materials - safe for potable water
- No heat, flame or Hot Work Permit needed to install
- Compatible with all leading brand hydraulic press tools and jaws
- Limited Lifetime Warranty

### Materials

- Body Construction: Copper
- Sealing Element (O-ring): EPDM

### Performance

- Operating Pressure (Max): 300 psi
- Test/Burst Pressure (Max): 600 psi
- Operating Temperature: 0°F - 250°F

### Pipe Compatibility

- ASTM B88 compliant Type K, L, M copper tubing
  - Hard copper: Nominal sizes 1/2" to 2"
  - Soft copper: Nominal sizes 1/2" to 1-1/4"

### Approved Applications (Services)

Approved for above and below ground applications but requires approval from local inspector prior to installation due to codes and soil conditions.

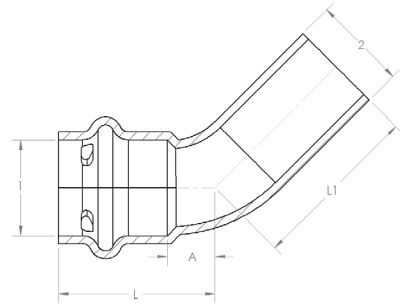
- Hot and cold potable water
- Rainwater/Gray water
- Chilled water
- Residential steam (5 psi maximum)
- Hydronic heating (≤50% ethylene / propylene glycol)

### Listings & Certificates

- IAPMO Listed for IAPMO/ANSI Z1117, NSF/ANSI 61/372
- ICC-ES Evaluated to ICC-ES LC1002
- Commonwealth of Massachusetts (Plumbing)

### Compliant with:

- ASTM B88
- ASTM D2000
- ASME B16.18
- ASME B16.22



### Dimensional Data

Part No.	Size (P x FTG)				
	1	2	A	L	L1
SPWE11-45STR	1/2	1/2	0.32	1.04	1.14
SPWE22-45STR	3/4	3/4	0.45	1.34	1.42
SPWE33-45STR	1	1	0.53	1.42	1.50
SPWE44-45STR	1-1/4	1-1/4	0.53	1.58	1.58
SPWE55-45STR	1-1/2	1-1/2	0.81	2.10	2.10
SPWE66-45STR	2	2	0.86	2.46	2.72

Fitting Size	Pipe Insertion Depth
1/2"	3/4"
3/4"	1"
1"	1"
1-1/4"	1-1/16"
1-1/2"	1-3/8"
2"	1-1/2"

Item # Submitted	
Job Name	
Date	
Engineer	
Contractor	
PO #	
Tag	



QuickFitting® SurePress® is line of press fittings that visually confirms a pressed connection. Green indication fills windows once pressed, confirming a successful seal. This allows installers and inspectors to quickly identify if a fitting has been pressed prior to pressure testing.

### Features and Benefits

- SurePress® Technology: PRESS-GREEN-GO
- Green indication in windows confirms a pressed connection
- Visible indication up to 5 ft. away
- Quickly identify if fittings are pressed prior to pressure testing
- Lead free materials - safe for potable water
- No heat, flame or Hot Work Permit needed to install
- Compatible with all leading brand hydraulic press tools and jaws
- Limited Lifetime Warranty

### Materials

- Body Construction: Copper
- Sealing Element (O-ring): EPDM

### Performance

- Operating Pressure (Max): 300 psi
- Test/Burst Pressure (Max): 600 psi
- Operating Temperature: 0°F - 250°F

### Pipe Compatibility

- ASTM B88 compliant Type K, L, M copper tubing
  - Hard copper: Nominal sizes 1/2" to 2"
  - Soft copper: Nominal sizes 1/2" to 1-1/4"

### Approved Applications (Services)

Approved for above and below ground applications but requires approval from local inspector prior to installation due to codes and soil conditions.

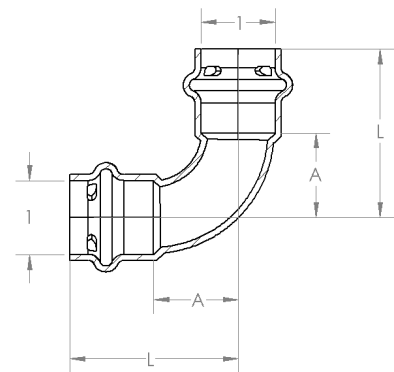
- Hot and cold potable water
- Rainwater/Gray water
- Chilled water
- Residential steam (5 psi maximum)
- Hydronic heating (≤50% ethylene / propylene glycol)

### Listings & Certificates

- IAPMO Listed for IAPMO/ANSI Z1117, NSF/ANSI 61/372
- ICC-ES Evaluated to ICC-ES LC1002
- Commonwealth of Massachusetts (Plumbing)

### Compliant with:

- ASTM B88
- ASTM D2000



### Dimensional Data

Part No.	Size (P x P)			
	1	1	A	L
SPWE11R	1/2	1/2	0.73	1.46
SPWE22R	3/4	3/4	0.96	1.85
SPWE33R	1	1	1.16	2.11
SPWE44R	1-1/4	1-1/4	1.51	2.56
SPWE55R	1-1/2	1-1/2	1.95	2.24
SPWE66R	2	2	2.34	3.94

Fitting Size	Pipe Insertion Depth
1/2"	3/4"
3/4"	1"
1"	1"
1-1/4"	1-1/16"
1-1/2"	1-3/8"
2"	1-1/2"

Item # Submitted	
Job Name	
Date	
Engineer	
Contractor	
PO #	
Tag	



QuickFitting® SurePress® is line of press fittings that visually confirms a pressed connection. Green indication fills windows once pressed, confirming a successful seal. This allows installers and inspectors to quickly identify if a fitting has been pressed prior to pressure testing.

### Features and Benefits

- SurePress® Technology: PRESS-GREEN-GO
- Green indication in windows confirms a pressed connection
- Visible indication up to 5 ft. away
- Quickly identify if fittings are pressed prior to pressure testing
- Lead free materials - safe for potable water
- No heat, flame or Hot Work Permit needed to install
- Compatible with all leading brand hydraulic press tools and jaws
- Limited Lifetime Warranty

### Materials

- Body Construction: Copper
- Sealing Element (O-ring): EPDM

### Performance

- Operating Pressure (Max): 300 psi
- Test/Burst Pressure (Max): 600 psi
- Operating Temperature: 0°F - 250°F

### Pipe Compatibility

- ASTM B88 compliant Type K, L, M copper tubing
  - Hard copper: Nominal sizes 1/2" to 2"
  - Soft copper: Nominal sizes 1/2" to 1-1/4"

### Approved Applications (Services)

Approved for above and below ground applications but requires approval from local inspector prior to installation due to codes and soil conditions.

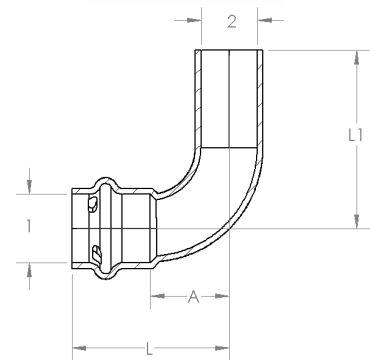
- Hot and cold potable water
- Rainwater/Gray water
- Chilled water
- Residential steam (5 psi maximum)
- Hydronic heating (≤50% ethylene / propylene glycol)

### Listings & Certificates

- IAPMO Listed for IAPMO/ANSI Z1117, NSF/ANSI 61/372
- ICC-ES Evaluated to ICC-ES LC1002
- Commonwealth of Massachusetts (Plumbing)

### Compliant with:

- ASTM B88
- ASTM D2000
- ASME B16.18
- ASME B16.22



### Dimensional Data

Part No.	Size (P x FTG)		A	L	L1
	1	2			
SPWE11-STR	1/2	1/2	0.73	1.46	1.65
SPWE22-STR	3/4	3/4	0.96	1.85	2.05
SPWE33-STR	1	1	1.22	2.11	2.17
SPWE44-STR	1-1/4	1-1/4	1.51	2.56	2.56
SPWE55-STR	1-1/2	1-1/2	1.95	3.24	3.24
SPWE66-STR	2	2	2.31	3.94	3.94

Fitting Size	Pipe Insertion Depth
1/2"	3/4"
3/4"	1"
1"	1"
1-1/4"	1-1/16"
1-1/2"	1-3/8"
2"	1-1/2"

Item # Submitted	
Job Name	
Date	
Engineer	
Contractor	
PO #	
Tag	



QuickFitting® SurePress® is line of press fittings that visually confirms a pressed connection. Green indication fills windows once pressed, confirming a successful seal. This allows installers and inspectors to quickly identify if a fitting has been pressed prior to pressure testing.

### Features and Benefits

- SurePress® Technology: PRESS-GREEN-GO
- Green indication in windows confirms a pressed connection
- Visible indication up to 5 ft. away
- Quickly identify if fittings are pressed prior to pressure testing
- Lead free materials - safe for potable water
- No heat, flame or Hot Work Permit needed to install
- Compatible with all leading brand hydraulic press tools and jaws
- 7-Year Limited Warranty

### Materials

- Body Construction: Brass
- Sealing Element (O-ring): EPDM

### Performance

- Operating Pressure (Max): 250 psi
- Test/Burst Pressure (Max): 600 psi
- Operating Temperature: 0°F - 200°F

### Pipe Compatibility

- ASTM B88 compliant Type K, L, M copper tubing
  - Hard copper: Nominal sizes 1/2" to 2"
  - Soft copper: Nominal sizes 1/2" to 1-1/4"

### Approved Applications (Services)

Approved for above and below ground applications but requires approval from local inspector prior to installation due to codes and soil conditions.

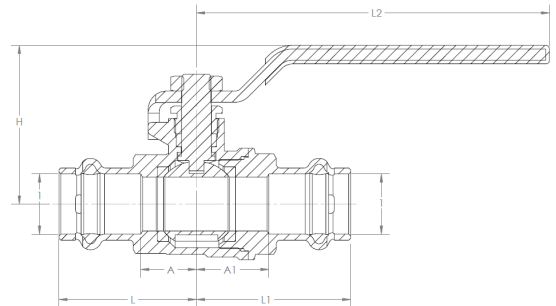
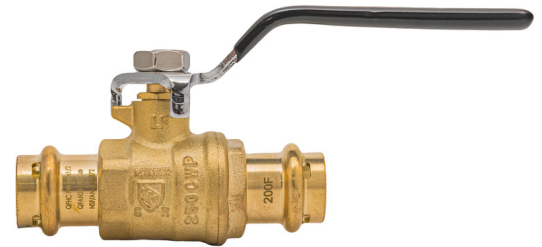
- Hot and cold potable water
- Rainwater/Gray water
- Chilled water
- Residential steam (5 psi maximum)
- Hydronic heating (≤50% ethylene / propylene glycol)

### Listings & Certificates

- IAPMO Listed for IAPMO/ANSI Z1117, IAPMO/ANSI Z1157, NSF/ANSI 61/372
- ICC-ES Evaluated to ICC-ES LC1002
- Commonwealth of Massachusetts (Plumbing)

### Compliant with:

- ASTM B88
- ASTM D2000



### Dimensional Data

Part No.	Size (P x P)							
	1	1	H	A	A1	L	L1	L2
SPBV11R	1/2	1/2	1.68	0.59	0.77	1.46	1.63	3.74
SPBV22R	3/4	3/4	1.90	0.73	0.91	1.63	1.81	3.74
SPBV33R	1	1	2.27	0.87	1.02	1.97	2.13	4.29
SPBV44R	1-1/4	1-1/4	2.85	1.03	1.20	2.39	2.56	5.67
SPBV55R	1-1/2	1-1/2	3.26	1.23	1.37	2.77	2.90	5.69
SPBV66R	2	2	3.53	1.77	1.64	3.30	3.45	6.42

Fitting Size	Pipe Insertion Depth
1/2"	3/4"
3/4"	1"
1"	1"
1-1/4"	1-1/16"
1-1/2"	1-3/8"
2"	1-1/2"

Item # Submitted	
Job Name	
Date	
Engineer	
Contractor	
PO #	
Tag	



QuickFitting® SurePress® is line of press fittings that visually confirms a pressed connection. Green indication fills windows once pressed, confirming a successful seal. This allows installers and inspectors to quickly identify if a fitting has been pressed prior to pressure testing.

### Features and Benefits

- SurePress® Technology: PRESS-GREEN-GO
- Green indication in windows confirms a pressed connection
- Visible indication up to 5 ft. away
- Quickly identify if fittings are pressed prior to pressure testing
- Lead free materials - safe for potable water
- No heat, flame or Hot Work Permit needed to install
- Compatible with all leading brand hydraulic press tools and jaws
- Limited Lifetime Warranty

### Materials

- Body Construction: Copper
- Sealing Element (O-ring): EPDM

### Performance

- Operating Pressure (Max): 300 psi
- Test/Burst Pressure (Max): 600 psi
- Operating Temperature: 0°F - 250°F

### Pipe Compatibility

- ASTM B88 compliant Type K, L, M copper tubing
  - Hard copper: Nominal sizes 1/2" to 2"
  - Soft copper: Nominal sizes 1/2" to 1-1/4"

### Approved Applications (Services)

Approved for above and below ground applications but requires approval from local inspector prior to installation due to codes and soil conditions.

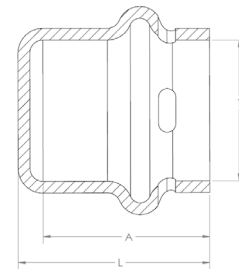
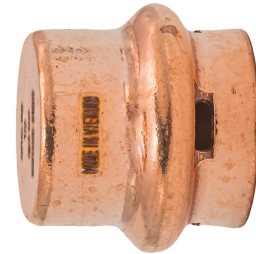
- Hot and cold potable water
- Rainwater/Gray water
- Chilled water
- Residential steam (5 psi maximum)
- Hydronic heating (≤50% ethylene / propylene glycol)

### Listings & Certificates

- IAPMO Listed for IAPMO/ANSI Z1117, NSF/ANSI 61/372
- ICC-ES Evaluated to ICC-ES LC1002
- Commonwealth of Massachusetts (Plumbing)

### Compliant with:

- ASTM B88
- ASTM D2000



### Dimensional Data

Part No.	Size (P)		
	1	A	L
SPWEC1R	1/2	0.75	0.87
SPWEC2R	3/4	0.85	0.96
SPWEC3R	1	0.93	1.02
SPWEC4R	1-1/4	1.03	1.14
SPWEC5R	1-1/2	1.30	1.49
SPWEC6R	2	1.58	1.65

Fitting Size	Pipe Insertion Depth
1/2"	3/4"
3/4"	1"
1"	1"
1-1/4"	1-1/16"
1-1/2"	1-3/8"
2"	1-1/2"

Item # Submitted	
Job Name	
Date	
Engineer	
Contractor	
PO #	
Tag	



QuickFitting® SurePress® is line of press fittings that visually confirms a pressed connection. Green indication fills windows once pressed, confirming a successful seal. This allows installers and inspectors to quickly identify if a fitting has been pressed prior to pressure testing.

### Features and Benefits

- SurePress® Technology: PRESS-GREEN-GO
- Green indication in windows confirms a pressed connection
- Visible indication up to 5 ft. away
- Quickly identify if fittings are pressed prior to pressure testing
- Lead free materials - safe for potable water
- No heat, flame or Hot Work Permit needed to install
- Compatible with all leading brand hydraulic press tools and jaws
- Limited Lifetime Warranty

### Materials

- Body Construction: Copper
- Sealing Element (O-ring): EPDM

### Performance

- Operating Pressure (Max): 300 psi
- Test/Burst Pressure (Max): 600 psi
- Operating Temperature: 0°F - 250°F

### Pipe Compatibility

- ASTM B88 compliant Type K, L, M copper tubing
  - Hard copper: Nominal sizes 1/2" to 2"
  - Soft copper: Nominal sizes 1/2" to 1-1/4"

### Approved Applications (Services)

Approved for above and below ground applications but requires approval from local inspector prior to installation due to codes and soil conditions.

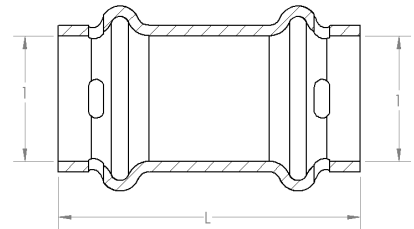
- Hot and cold potable water
- Rainwater/Gray water
- Chilled water
- Residential steam (5 psi maximum)
- Hydronic heating (≤50% ethylene / propylene glycol)

### Listings & Certificates

- IAPMO Listed for IAPMO/ANSI Z1117, NSF/ANSI 61/372
- ICC-ES Evaluated to ICC-ES LC1002
- Commonwealth of Massachusetts (Plumbing)

### Compliant with:

- ASTM B88
- ASTM D2000



### Dimensional Data

Part No.	Size (P x P)		
	1	1	L
SPWC11NSR	1/2	1/2	1.54
SPWC22NSR	3/4	3/4	1.89
SPWC33NSR	1	1	1.97
SPWC44NSR	1-1/4	1-1/4	2.17
SPWC55NSR	1-1/2	1-1/2	2.76
SPWC66NSR	2	2	3.23

Fitting Size	Pipe Insertion Depth
1/2"	3/4"
3/4"	1"
1"	1"
1-1/4"	1-1/16"
1-1/2"	1-3/8"
2"	1-1/2"

Item # Submitted	
Job Name	
Date	
Engineer	
Contractor	
PO #	
Tag	



QuickFitting® SurePress® is line of press fittings that visually confirms a pressed connection. Green indication fills windows once pressed, confirming a successful seal. This allows installers and inspectors to quickly identify if a fitting has been pressed prior to pressure testing.

### Features and Benefits

- SurePress® Technology: PRESS-GREEN-GO
- Green indication in windows confirms a pressed connection
- Visible indication up to 5 ft. away
- Quickly identify if fittings are pressed prior to pressure testing
- Lead free materials - safe for potable water
- No heat, flame or Hot Work Permit needed to install
- Compatible with all leading brand hydraulic press tools and jaws
- Limited Lifetime Warranty

### Materials

- Body Construction: Copper
- Sealing Element (O-ring): EPDM

### Performance

- Operating Pressure (Max): 300 psi
- Test/Burst Pressure (Max): 600 psi
- Operating Temperature: 0°F - 250°F

### Pipe Compatibility

- ASTM B88 compliant Type K, L, M copper tubing
  - Hard copper: Nominal sizes 1/2" to 2"
  - Soft copper: Nominal sizes 1/2" to 1-1/4"

### Approved Applications (Services)

Approved for above and below ground applications but requires approval from local inspector prior to installation due to codes and soil conditions.

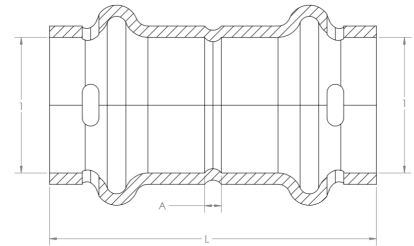
- Hot and cold potable water
- Rainwater/Gray water
- Chilled water
- Residential steam (5 psi maximum)
- Hydronic heating (≤50% ethylene / propylene glycol)

### Listings & Certificates

- IAPMO Listed for IAPMO/ANSI Z1117, NSF/ANSI 61/372
- ICC-ES Evaluated to ICC-ES LC1002
- Commonwealth of Massachusetts (Plumbing)

### Compliant with:

- ASTM B88
- ASTM D2000



### Dimensional Data

Part No.	Size (P x P)			
	1	1	A	L
SPWC11R	1/2	1/2	0.08	1.54
SPWC22R	3/4	3/4	0.02	1.89
SPWC33R	1	1	0.14	1.97
SPWC44R	1-1/4	1-1/4	0.12	2.17
SPWC55R	1-1/2	1-1/2	0.12	2.76
SPWC66R	2	2	0.11	3.23

Fitting Size	Pipe Insertion Depth
1/2"	3/4"
3/4"	1"
1"	1"
1-1/4"	1-1/16"
1-1/2"	1-3/8"
2"	1-1/2"

Item # Submitted	
Job Name	
Date	
Engineer	
Contractor	
PO #	
Tag	



QuickFitting® SurePress® is line of press fittings that visually confirms a pressed connection. Green indication fills windows once pressed, confirming a successful seal. This allows installers and inspectors to quickly identify if a fitting has been pressed prior to pressure testing.

### Features and Benefits

- SurePress® Technology: PRESS-GREEN-GO
- Green indication in windows confirms a pressed connection
- Visible indication up to 5 ft. away
- Quickly identify if fittings are pressed prior to pressure testing
- Lead free materials - safe for potable water
- No heat, flame or Hot Work Permit needed to install
- Compatible with all leading brand hydraulic press tools and jaws
- Limited Lifetime Warranty

### Materials

- Body Construction: Brass
- Sealing Element (O-ring): EPDM

### Performance

- Operating Pressure (Max): 300 psi
- Test/Burst Pressure (Max): 600 psi
- Operating Temperature: 0°F - 250°F

### Pipe Compatibility

- ASTM B88 compliant Type K, L, M copper tubing
  - Hard copper: Nominal sizes 1/2" to 2"
  - Soft copper: Nominal sizes 1/2" to 1-1/4"

### Approved Applications (Services)

Approved for above and below ground applications but requires approval from local inspector prior to installation due to codes and soil conditions.

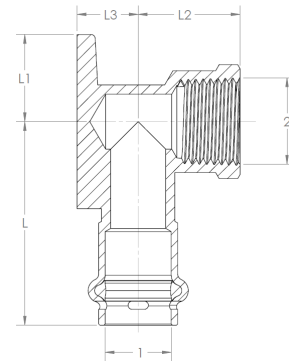
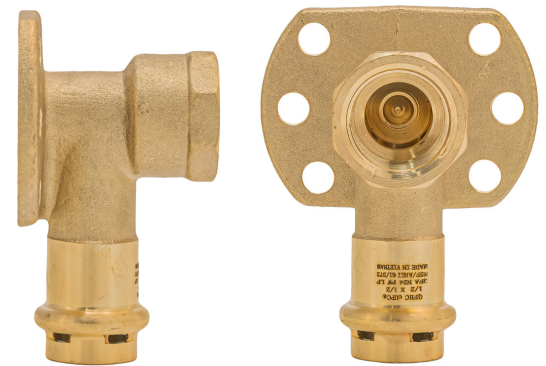
- Hot and cold potable water
- Rainwater/Gray water
- Chilled water
- Residential steam (5 psi maximum)
- Hydronic heating (≤50% ethylene / propylene glycol)

### Listings & Certificates

- IAPMO Listed for IAPMO/ANSI Z1117, NSF/ANSI 61/372
- ICC-ES Evaluated to ICC-ES LC1002
- Commonwealth of Massachusetts (Plumbing)

### Compliant with:

- ASTM B88
- ASTM D2000
- ASME B1.20.1



### Dimensional Data

Part No.	Size (P x FNPT)					
	1	2	L	L1	L2	L3
SPWD11R	1/2	1/2	1.97	0.84	0.59	0.98
SPWD22R	3/4	3/4	2.19	0.84	0.75	1.14

Fitting Size	Pipe Insertion Depth
1/2"	3/4"
3/4"	1"

Item # Submitted	
Job Name	
Date	
Engineer	
Contractor	
PO #	
Tag	



QuickFitting® SurePress® is line of press fittings that visually confirms a pressed connection. Green indication fills windows once pressed, confirming a successful seal. This allows installers and inspectors to quickly identify if a fitting has been pressed prior to pressure testing.

### Features and Benefits

- SurePress® Technology: PRESS-GREEN-GO
- Green indication in windows confirms a pressed connection
- Visible indication up to 5 ft. away
- Quickly identify if fittings are pressed prior to pressure testing
- Lead free materials - safe for potable water
- No heat, flame or Hot Work Permit needed to install
- Compatible with all leading brand hydraulic press tools and jaws
- Limited Lifetime Warranty

### Materials

- Body Construction: Copper
- Sealing Element (O-ring): EPDM

### Performance

- Operating Pressure (Max): 300 psi
- Test/Burst Pressure (Max): 600 psi
- Operating Temperature: 0°F - 250°F

### Pipe Compatibility

- ASTM B88 compliant Type K, L, M copper tubing
  - Hard copper: Nominal sizes 1/2" to 2"
  - Soft copper: Nominal sizes 1/2" to 1-1/4"

### Approved Applications (Services)

Approved for above and below ground applications but requires approval from local inspector prior to installation due to codes and soil conditions.

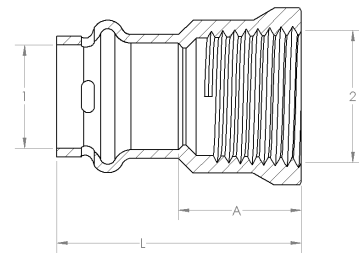
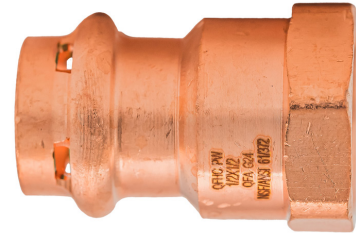
- Hot and cold potable water
- Rainwater/Gray water
- Chilled water
- Residential steam (5 psi maximum)
- Hydronic heating (≤50% ethylene / propylene glycol)

### Listings & Certificates

- IAPMO Listed for IAPMO/ANSI Z1117, NSF/ANSI 61/372
- ICC-ES Evaluated to ICC-ES LC1002
- Commonwealth of Massachusetts (Plumbing)

### Compliant with:

- ASTM B88
- ASTM D2000
- ASME B1.20.1



### Dimensional Data

Part No.	Size (P x FNPT)			
	1	2	A	L
SPWF11R	1/2	1/2	0.76	1.50
SPWF12R	1/2	3/4	1.00	1.75
SPWF21R	3/4	1/2	0.85	1.75
SPWF22R	3/4	3/4	0.87	1.77
SPWF32R	1	3/4	0.91	1.81
SPWF33R	1	1	0.98	1.89
SPWF44R	1-1/4	1-1/4	1.02	2.05
SPWF55R	1-1/2	1-1/2	1.14	2.44
SPWF66R	2	2	1.06	2.64

Fitting Size	Pipe Insertion Depth
1/2"	3/4"
3/4"	1"
1"	1"
1-1/4"	1-1/16"
1-1/2"	1-3/8"
2"	1-1/2"

Item # Submitted	
Job Name	
Date	
Engineer	
Contractor	
PO #	
Tag	



QuickFitting® SurePress® is line of press fittings that visually confirms a pressed connection. Green indication fills windows once pressed, confirming a successful seal. This allows installers and inspectors to quickly identify if a fitting has been pressed prior to pressure testing.

### Features and Benefits

- SurePress® Technology: PRESS-GREEN-GO
- Green indication in windows confirms a pressed connection
- Visible indication up to 5 ft. away
- Quickly identify if fittings are pressed prior to pressure testing
- Lead free materials - safe for potable water
- No heat, flame or Hot Work Permit needed to install
- Compatible with all leading brand hydraulic press tools and jaws
- Limited Lifetime Warranty

### Materials

- Body Construction: Brass
- Sealing Element (O-ring): EPDM

### Performance

- Operating Pressure (Max): 300 psi
- Test/Burst Pressure (Max): 600 psi
- Operating Temperature: 0°F - 250°F

### Pipe Compatibility

- ASTM B88 compliant Type K, L, M copper tubing
  - Hard copper: Nominal sizes 1/2" to 2"
  - Soft copper: Nominal sizes 1/2" to 1-1/4"

### Approved Applications (Services)

Approved for above and below ground applications but requires approval from local inspector prior to installation due to codes and soil conditions.

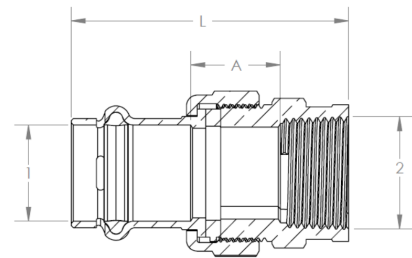
- Hot and cold potable water
- Rainwater/Gray water
- Chilled water
- Residential steam (5 psi maximum)
- Hydronic heating (≤50% ethylene / propylene glycol)

### Listings & Certificates

- IAPMO Listed for IAPMO/ANSI Z1117, NSF/ANSI 61/372
- ICC-ES Evaluated to ICC-ES LC1002
- Commonwealth of Massachusetts (Plumbing)

### Compliant with:

- ASTM B88
- ASTM D2000
- ASME B1.20.1



### Dimensional Data

Part No.	Size (P x FNPT)			
	1	2	A	L
SPWUF22R	3/4	3/4	0.83	2.56

Fitting Size	Pipe Insertion Depth
3/4"	1"



Item # Submitted	
Job Name	
Date	
Engineer	
Contractor	
PO #	
Tag	

QuickFitting® SurePress® is line of press fittings that visually confirms a pressed connection. Green indication fills windows once pressed, confirming a successful seal. This allows installers and inspectors to quickly identify if a fitting has been pressed prior to pressure testing.

### Features and Benefits

- SurePress® Technology: PRESS-GREEN-GO
- Green indication in windows confirms a pressed connection
- Visible indication up to 5 ft. away
- Quickly identify if fittings are pressed prior to pressure testing
- Lead free materials - safe for potable water
- No heat, flame or Hot Work Permit needed to install
- Compatible with all leading brand hydraulic press tools and jaws
- Limited Lifetime Warranty

### Materials

- Body Construction: Copper
- Sealing Element (O-ring): EPDM

### Performance

- Operating Pressure (Max): 300 psi
- Test/Burst Pressure (Max): 600 psi
- Operating Temperature: 0°F - 250°F

### Pipe Compatibility

- ASTM B88 compliant Type K, L, M copper tubing
  - Hard copper: Nominal sizes 1/2" to 2"
  - Soft copper: Nominal sizes 1/2" to 1-1/4"

### Approved Applications (Services)

Approved for above and below ground applications but requires approval from local inspector prior to installation due to codes and soil conditions.

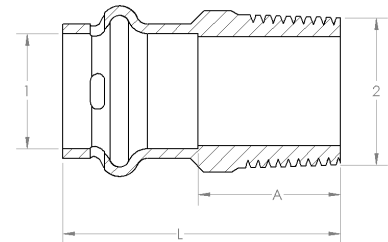
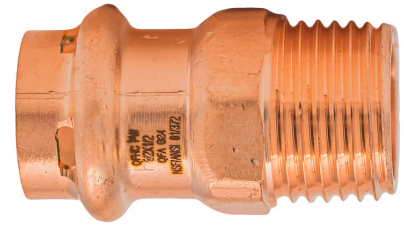
- Hot and cold potable water
- Rainwater/Gray water
- Chilled water
- Residential steam (5 psi maximum)
- Hydronic heating (≤50% ethylene / propylene glycol)

### Listings & Certificates

- IAPMO Listed for IAPMO/ANSI Z1117, NSF/ANSI 61/372
- ICC-ES Evaluated to ICC-ES LC1002
- Commonwealth of Massachusetts (Plumbing)

### Compliant with:

- ASTM B88
- ASTM D2000
- ASME B1.20.1



### Dimensional Data

Part No.	Size (P x MNPT)			L
	1	2	A	
SPWM11R	1/2	1/2	0.79	1.54
SPWM12R	1/2	3/4	1.04	1.79
SPWM21R	3/4	1/2	0.94	1.85
SPWM22R	3/4	3/4	0.87	1.77
SPWM33R	1	1	1.18	2.09
SPWM44R	1-1/4	1-1/4	1.26	2.28
SPWM55R	1-1/2	1-1/2	1.38	2.68
SPWM66R	2	2	1.46	2.99

Fitting Size	Pipe Insertion Depth
1/2"	3/4"
3/4"	1"
1"	1"
1-1/4"	1-1/16"
1-1/2"	1-3/8"
2"	1-1/2"

Item # Submitted	
Job Name	
Date	
Engineer	
Contractor	
PO #	
Tag	



QuickFitting® SurePress® is line of press fittings that visually confirms a pressed connection. Green indication fills windows once pressed, confirming a successful seal. This allows installers and inspectors to quickly identify if a fitting has been pressed prior to pressure testing.

### Features and Benefits

- SurePress® Technology: PRESS-GREEN-GO
- Green indication in windows confirms a pressed connection
- Visible indication up to 5 ft. away
- Quickly identify if fittings are pressed prior to pressure testing
- Lead free materials - safe for potable water
- No heat, flame or Hot Work Permit needed to install
- Compatible with all leading brand hydraulic press tools and jaws
- Limited Lifetime Warranty

### Materials

- Body Construction: Brass
- Sealing Element (O-ring): EPDM

### Performance

- Operating Pressure (Max): 300 psi
- Test/Burst Pressure (Max): 600 psi
- Operating Temperature: 0°F - 250°F

### Pipe Compatibility

- ASTM B88 compliant Type K, L, M copper tubing
  - Hard copper: Nominal sizes 1/2" to 2"
  - Soft copper: Nominal sizes 1/2" to 1-1/4"

### Approved Applications (Services)

Approved for above and below ground applications but requires approval from local inspector prior to installation due to codes and soil conditions.

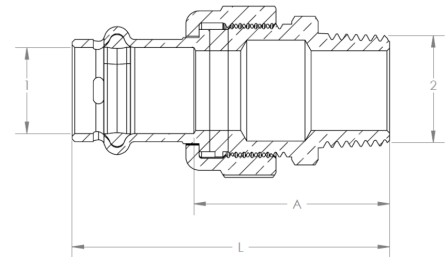
- Hot and cold potable water
- Rainwater/Gray water
- Chilled water
- Residential steam (5 psi maximum)
- Hydronic heating (≤50% ethylene / propylene glycol)

### Listings & Certificates

- IAPMO Listed for IAPMO/ANSI Z1117, NSF/ANSI 61/372
- ICC-ES Evaluated to ICC-ES LC1002
- Commonwealth of Massachusetts (Plumbing)

### Compliant with:

- ASTM B88
- ASTM D2000
- ASME B1.20.1



### Dimensional Data

Part No.	Size (P x MNPT)			
	1	2	A	L
SPWUM11R	1/2	1/2	1.46	2.36
SPWUM22R	3/4	3/4	1.65	2.76

Fitting Size	Pipe Insertion Depth
1/2"	3/4"
3/4"	1"



Item # Submitted	
Job Name	
Date	
Engineer	
Contractor	
PO #	
Tag	

QuickFitting® SurePress® is line of press fittings that visually confirms a pressed connection. Green indication fills windows once pressed, confirming a successful seal. This allows installers and inspectors to quickly identify if a fitting has been pressed prior to pressure testing.

### Features and Benefits

- SurePress® Technology: PRESS-GREEN-GO
- Green indication in windows confirms a pressed connection
- Visible indication up to 5 ft. away
- Quickly identify if fittings are pressed prior to pressure testing
- Lead free materials - safe for potable water
- No heat, flame or Hot Work Permit needed to install
- Compatible with all leading brand hydraulic press tools and jaws
- Limited Lifetime Warranty

### Materials

- Body Construction: Copper
- Sealing Element (O-ring): EPDM

### Performance

- Operating Pressure (Max): 300 psi
- Test/Burst Pressure (Max): 600 psi
- Operating Temperature: 0°F - 250°F

### Pipe Compatibility

- ASTM B88 compliant Type K, L, M copper tubing
  - Hard copper: Nominal sizes 1/2" to 2"
  - Soft copper: Nominal sizes 1/2" to 1-1/4"

### Approved Applications (Services)

Approved for above and below ground applications but requires approval from local inspector prior to installation due to codes and soil conditions.

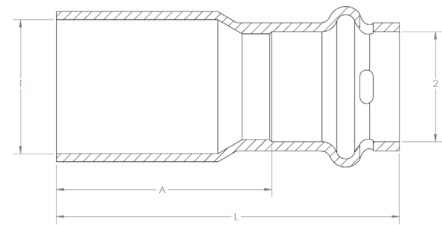
- Hot and cold potable water
- Rainwater/Gray water
- Chilled water
- Residential steam (5 psi maximum)
- Hydronic heating (≤50% ethylene / propylene glycol)

### Listings & Certificates

- IAPMO Listed for IAPMO/ANSI Z1117, NSF/ANSI 61/372
- ICC-ES Evaluated to ICC-ES LC1002
- Commonwealth of Massachusetts (Plumbing)

### Compliant with:

- ASTM B88
- ASTM D2000
- ASME B16.18
- ASME B16.22



### Dimensional Data

Part No.	Size (FTG x P)			
	1	2	A	L
SPWRC21-STR	3/4	1	1.26	2.01
SPWRC31-STR	1	1	1.54	2.28
SPWRC32-STR	1	3/4	1.26	2.17
SPWRC41-STR	1-1/4	1/2	1.69	2.44
SPWRC42-STR	1-1/4	3/4	1.69	2.60
SPWRC43-STR	1-1/4	1	1.54	2.44
SPWRC52-STR	1-1/2	3/4	2.05	2.95
SPWRC53-STR	1-1/2	1	1.93	2.84
SPWRC54-STR	1-1/2	1-1/4	1.85	2.87
SPWRC63-STR	2	1	2.48	3.39
SPWRC64-STR	2	1-1/4	2.48	3.31
SPWRC65-STR	2	1-1/2	2.24	3.54

Fitting Size	Pipe Insertion Depth
1/2"	3/4"
3/4"	1"
1"	1"
1-1/4"	1-1/16"
1-1/2"	1-3/8"
2"	1-1/2"

Item # Submitted	
Job Name	
Date	
Engineer	
Contractor	
PO #	
Tag	



QuickFitting® SurePress® is line of press fittings that visually confirms a pressed connection. Green indication fills windows once pressed, confirming a successful seal. This allows installers and inspectors to quickly identify if a fitting has been pressed prior to pressure testing.

### Features and Benefits

- SurePress® Technology: PRESS-GREEN-GO
- Green indication in windows confirms a pressed connection
- Visible indication up to 5 ft. away
- Quickly identify if fittings are pressed prior to pressure testing
- Lead free materials - safe for potable water
- No heat, flame or Hot Work Permit needed to install
- Compatible with all leading brand hydraulic press tools and jaws
- Limited Lifetime Warranty

### Materials

- Body Construction: Copper
- Sealing Element (O-ring): EPDM

### Performance

- Operating Pressure (Max): 300 psi
- Test/Burst Pressure (Max): 600 psi
- Operating Temperature: 0°F - 250°F

### Pipe Compatibility

- ASTM B88 compliant Type K, L, M copper tubing
  - Hard copper: Nominal sizes 1/2" to 2"
  - Soft copper: Nominal sizes 1/2" to 1-1/4"

### Approved Applications (Services)

Approved for above and below ground applications but requires approval from local inspector prior to installation due to codes and soil conditions.

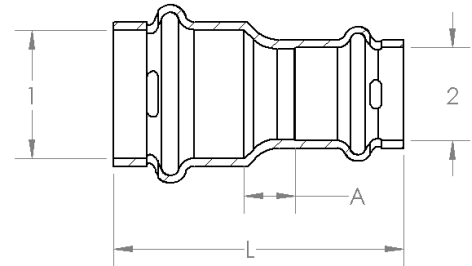
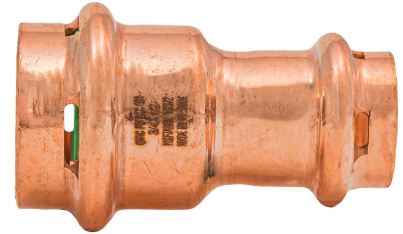
- Hot and cold potable water
- Rainwater/Gray water
- Chilled water
- Residential steam (5 psi maximum)
- Hydronic heating (≤50% ethylene / propylene glycol)

### Listings & Certificates

- IAPMO Listed for IAPMO/ANSI Z1117, NSF/ANSI 61/372
- ICC-ES Evaluated to ICC-ES LC1002
- Commonwealth of Massachusetts (Plumbing)

### Compliant with:

- ASTM B88
- ASTM D2000



### Dimensional Data

Part No.	Size (P x P)			
	1	2	A	L
SPWRC21R	3/4	1/2	0.35	2.01
SPWRC31R	1	1/2	0.46	2.17
SPWRC32R	1	3/4	0.25	2.01
SPWRC42R	1-1/4	3/4	0.49	2.42
SPWRC43R	1-1/4	1	0.35	2.28
SPWRC52R	1-1/2	3/4	0.59	2.80
SPWRC53R	1-1/2	1	0.47	2.68
SPWRC54R	1-1/2	1-1/4	0.39	2.72
SPWRC62R	2	3/4	0.91	3.39
SPWRC63R	2	1	0.79	3.27
SPWRC64R	2	1-1/4	0.67	3.27
SPWRC65R	2	1-1/2	0.51	3.39

Fitting Size	Pipe Insertion Depth
1/2"	3/4"
3/4"	1"
1"	1"
1-1/4"	1-1/16"
1-1/2"	1-3/8"
2"	1-1/2"

Item # Submitted	
Job Name	
Date	
Engineer	
Contractor	
PO #	
Tag	



QuickFitting® SurePress® is line of press fittings that visually confirms a pressed connection. Green indication fills windows once pressed, confirming a successful seal. This allows installers and inspectors to quickly identify if a fitting has been pressed prior to pressure testing.

### Features and Benefits

- SurePress® Technology: PRESS-GREEN-GO
- Green indication in windows confirms a pressed connection
- Visible indication up to 5 ft. away
- Quickly identify if fittings are pressed prior to pressure testing
- Lead free materials - safe for potable water
- No heat, flame or Hot Work Permit needed to install
- Compatible with all leading brand hydraulic press tools and jaws
- Limited Lifetime Warranty

### Materials

- Body Construction: Copper
- Sealing Element (O-ring): EPDM

### Performance

- Operating Pressure (Max): 300 psi
- Test/Burst Pressure (Max): 600 psi
- Operating Temperature: 0°F - 250°F

### Pipe Compatibility

- ASTM B88 compliant Type K, L, M copper tubing
  - Hard copper: Nominal sizes 1/2" to 2"
  - Soft copper: Nominal sizes 1/2" to 1-1/4"

### Approved Applications (Services)

Approved for above and below ground applications but requires approval from local inspector prior to installation due to codes and soil conditions.

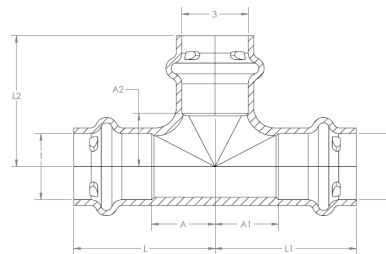
- Hot and cold potable water
- Rainwater/Gray water
- Chilled water
- Residential steam (5 psi maximum)
- Hydronic heating (≤50% ethylene / propylene glycol)

### Listings & Certificates

- IAPMO Listed for IAPMO/ANSI Z1117, NSF/ANSI 61/372
- ICC-ES Evaluated to ICC-ES LC1002
- Commonwealth of Massachusetts (Plumbing)

### Compliant with:

- ASTM B88
- ASTM D2000



Fitting Size	Pipe Insertion Depth
1/2"	3/4"
3/4"	1"
1"	1"
1-1/4"	1-1/16"
1-1/2"	1-3/8"
2"	1-1/2"

### Dimensional Data

Part No.	Size (P x P x P)								
	1	2	3	A	A1	A2	L	L1	L2
SPWT111R	1/2	1/2	1/2	0.61	0.61	0.51	1.36	1.36	1.26
SPWT112R	1/2	1/2	3/4	1.00	1.00	0.59	1.75	1.75	1.50
SPWT211R	3/4	1/2	1/2	0.67	0.83	0.65	1.58	1.58	1.40
SPWT212R	3/4	1/2	3/4	0.79	0.94	0.57	1.69	1.69	1.48
SPWT221R	3/4	3/4	1/2	0.67	0.67	0.65	1.57	1.57	1.40
SPWT222R	3/4	3/4	3/4	0.75	0.75	0.58	1.65	1.65	1.48
SPWT312R	1	1/2	3/4	0.77	1.12	0.75	1.67	1.87	1.65
SPWT313R	1	1/2	1	0.87	0.80	0.79	1.77	2.07	1.69
SPWT321R	1	3/4	1/2	0.61	1.16	0.81	1.52	1.71	1.56
SPWT322R	1	3/4	3/4	0.75	1.02	0.73	1.65	1.93	1.64
SPWT323R	1	3/4	1	0.87	0.88	0.79	1.77	2.07	1.69
SPWT331R	1	1	1/2	0.85	1.30	0.77	1.75	2.05	1.67
SPWT332R	1	1	3/4	0.85	1.14	0.77	1.75	2.05	1.67
SPWT333R	1	1	1	0.83	0.85	0.77	1.75	1.75	1.68
SPWT441R	1-1/4	1-1/4	1/2	0.47	0.47	0.94	1.50	1.50	1.69
SPWT442R	1-1/4	1-1/4	3/4	0.59	0.59	0.87	1.61	1.61	1.77
SPWT443R	1-1/4	1-1/4	1	0.67	0.67	0.87	1.69	1.69	1.77
SPWT444R	1-1/4	1-1/4	1-1/4	0.95	0.95	0.83	1.97	1.97	1.85
SPWT552R	1-1/2	1-1/2	3/4	0.67	0.67	1.02	1.97	1.97	1.92
SPWT553R	1-1/2	1-1/2	1	0.77	0.77	1.10	2.07	2.07	2.01
SPWT554R	1-1/2	1-1/2	1-1/4	0.77	0.77	1.06	2.07	2.07	2.01
SPWT555R	1-1/2	1-1/2	1-1/2	1.06	1.06	1.06	2.36	2.36	2.36
SPWT662R	2	2	3/4	0.63	0.63	1.28	2.21	2.21	2.18
SPWT663R	2	2	1	0.75	0.75	1.34	2.32	2.32	2.24
SPWT664R	2	2	1-1/4	0.95	0.95	1.34	2.52	2.52	2.36
SPWT665R	2	2	1-1/2	1.06	1.06	1.30	2.64	2.64	2.60
SPWT666R	2	2	2	1.28	1.28	1.28	2.85	2.85	2.85

Item # Submitted	
Job Name	
Date	
Engineer	
Contractor	
PO #	
Tag	



QuickFitting® SurePress® is line of press fittings that visually confirms a pressed connection. Green indication fills windows once pressed, confirming a successful seal. This allows installers and inspectors to quickly identify if a fitting has been pressed prior to pressure testing.

### Features and Benefits

- SurePress® Technology: PRESS-GREEN-GO
- Green indication in windows confirms a pressed connection
- Visible indication up to 5 ft. away
- Quickly identify if fittings are pressed prior to pressure testing
- Lead free materials - safe for potable water
- No heat, flame or Hot Work Permit needed to install
- Compatible with all leading brand hydraulic press tools and jaws
- Limited Lifetime Warranty

### Materials

- Body Construction: Brass
- Sealing Element (O-ring): EPDM

### Performance

- Operating Pressure (Max): 300 psi
- Test/Burst Pressure (Max): 600 psi
- Operating Temperature: 0°F - 250°F

### Pipe Compatibility

- ASTM B88 compliant Type K, L, M copper tubing
  - Hard copper: Nominal sizes 1/2" to 2"
  - Soft copper: Nominal sizes 1/2" to 1-1/4"

### Approved Applications (Services)

Approved for above and below ground applications but requires approval from local inspector prior to installation due to codes and soil conditions.

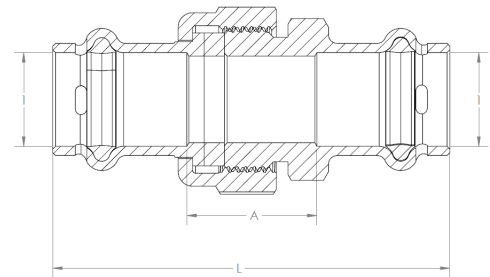
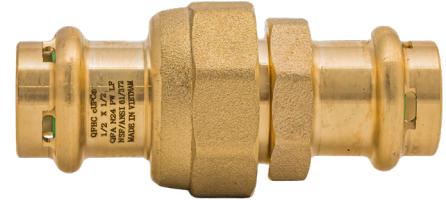
- Hot and cold potable water
- Rainwater/Gray water
- Chilled water
- Residential steam (5 psi maximum)
- Hydronic heating (≤50% ethylene / propylene glycol)

### Listings & Certificates

- IAPMO Listed for IAPMO/ANSI Z1117, NSF/ANSI 61/372
- ICC-ES Evaluated to ICC-ES LC1002
- Commonwealth of Massachusetts (Plumbing)

### Compliant with:

- ASTM B88
- ASTM D2000



### Dimensional Data

Part No.	Size (P x P)		A	L
	1	2		
SPWU11R	1/2	1/2	0.89	2.70
SPWU22R	3/4	3/4	0.98	3.19
SPWU33R	1	1	1.18	3.39
SPWU44R	1-1/4	1-1/4	1.29	3.93
SPWU55R	1-1/2	1-1/2	1.28	4.27
SPWU66R	2	2	1.54	5.08

Fitting Size	Pipe Insertion Depth
1/2"	3/4"
3/4"	1"
1"	1"
1-1/4"	1-1/16"
1-1/2"	1-3/8"
2"	1-1/2"

Item # Submitted	
Job Name	
Date	
Engineer	
Contractor	
PO #	
Tag	



QuickFitting® SurePress® is line of press fittings that visually confirms a pressed connection. Green indication fills windows once pressed, confirming a successful seal. This allows installers and inspectors to quickly identify if a fitting has been pressed prior to pressure testing.

### Features and Benefits

- SurePress® Technology: PRESS-GREEN-GO
- Green indication in windows confirms a pressed connection
- Visible indication up to 5 ft. away
- Quickly identify if fittings are pressed prior to pressure testing
- Lead free materials - safe for potable water
- No heat, flame or Hot Work Permit needed to install
- Compatible with all leading brand hydraulic press tools and jaws
- Limited Lifetime Warranty

### Materials

- Body Construction: Copper
- O-Ring: EPDM (Black)
- Indicator Ring: EPDM (Green)
- Grip Ring: 301 Stainless Steel
- Plate Gasket: Nylon
- Guard Ring: Nylon

### Performance

- Operating Pressure (Max): 300 psi
- Test/Burst Pressure (Max): 600 psi
- Operating Temperature: 0°F - 250°F

### Pipe Compatibility

- ASTM B88 compliant Type K, L, M copper tubing
  - Hard copper: Nominal sizes 2-1/2" to 4"

### Approved Applications (Services)

Approved for above and below ground applications but requires approval from local inspector prior to installation due to codes and soil conditions.

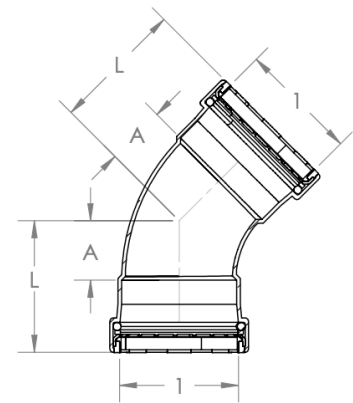
- Hot and cold potable water
- Rainwater/Gray water
- Chilled water
- Residential steam (5 psi maximum)
- Hydronic heating (≤50% ethylene / propylene glycol)

### Listings & Certificates

- IAPMO Listed for IAPMO/ANSI Z1117, NSF/ANSI 61/372
- ICC-ES Evaluated to ICC-ES LC1002
- Commonwealth of Massachusetts (Plumbing)

### Compliant with:

- ASTM B88
- ASTM D2000



### Dimensional Data

Part No.	Size (P x P)			
	1	1	A	L
SPWE77-45R	2-1/2	2-1/2	1.36	3.02
SPWE88-45R	3	3	1.48	3.41
SPWE99-45R	4	4	2.05	4.33

Fitting Size	Pipe Insertion Depth
2-1/2"	1-3/4"
3"	2-3/16"
4"	2-3/8"

Item # Submitted	
Job Name	
Date	
Engineer	
Contractor	
PO #	
Tag	



QuickFitting® SurePress® is line of press fittings that visually confirms a pressed connection. Green indication fills windows once pressed, confirming a successful seal. This allows installers and inspectors to quickly identify if a fitting has been pressed prior to pressure testing.

### Features and Benefits

- SurePress® Technology: PRESS-GREEN-GO
- Green indication in windows confirms a pressed connection
- Visible indication up to 5 ft. away
- Quickly identify if fittings are pressed prior to pressure testing
- Lead free materials - safe for potable water
- No heat, flame or Hot Work Permit needed to install
- Compatible with all leading brand hydraulic press tools and jaws
- Limited Lifetime Warranty

### Materials

- Body Construction: Copper
- O-Ring: EPDM (Black)
- Indicator Ring: EPDM (Green)
- Grip Ring: 301 Stainless Steel
- Plate Gasket: Nylon
- Guard Ring: Nylon

### Performance

- Operating Pressure (Max): 300 psi
- Test/Burst Pressure (Max): 600 psi
- Operating Temperature: 0°F - 250°F

### Pipe Compatibility

- ASTM B88 compliant Type K, L, M copper tubing
  - Hard copper: Nominal sizes 2-1/2" to 4"

### Approved Applications (Services)

Approved for above and below ground applications but requires approval from local inspector prior to installation due to codes and soil conditions.

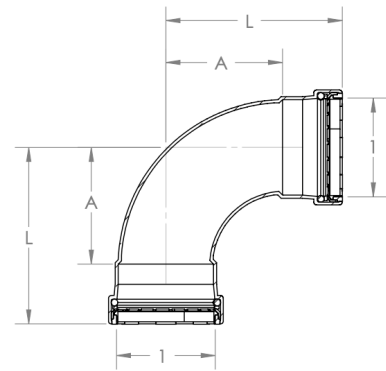
- Hot and cold potable water
- Rainwater/Gray water
- Chilled water
- Residential steam (5 psi maximum)
- Hydronic heating (≤50% ethylene / propylene glycol)

### Listings & Certificates

- IAPMO Listed for IAPMO/ANSI Z1117, NSF/ANSI 61/372
- ICC-ES Evaluated to ICC-ES LC1002
- Commonwealth of Massachusetts (Plumbing)

### Compliant with:

- ASTM B88
- ASTM D2000



### Dimensional Data

Part No.	Size (P x P)			
	1	1	A	L
SPWE77R	2-1/2	2-1/2	3.23	4.88
SPWE88R	3	3	3.66	5.59
SPWE99R	4	4	4.72	7.01

Fitting Size	Pipe Insertion Depth
2-1/2"	1-3/4"
3"	2-3/16"
4"	2-3/8"

Item # Submitted	
Job Name	
Date	
Engineer	
Contractor	
PO #	
Tag	



QuickFitting® SurePress® is line of press fittings that visually confirms a pressed connection. Green indication fills windows once pressed, confirming a successful seal. This allows installers and inspectors to quickly identify if a fitting has been pressed prior to pressure testing.

### Features and Benefits

- SurePress® Technology: PRESS-GREEN-GO
- Green indication in windows confirms a pressed connection
- Visible indication up to 5 ft. away
- Quickly identify if fittings are pressed prior to pressure testing
- Lead free materials - safe for potable water
- No heat, flame or Hot Work Permit needed to install
- Compatible with all leading brand hydraulic press tools and jaws
- Limited Lifetime Warranty

### Materials

- Body Construction: Copper
- O-Ring: EPDM (Black)
- Indicator Ring: EPDM (Green)
- Grip Ring: 301 Stainless Steel
- Plate Gasket: Nylon
- Guard Ring: Nylon

### Performance

- Operating Pressure (Max): 300 psi
- Test/Burst Pressure (Max): 600 psi
- Operating Temperature: 0°F - 250°F

### Pipe Compatibility

- ASTM B88 compliant Type K, L, M copper tubing
  - Hard copper: Nominal sizes 2-1/2" to 4"

### Approved Applications (Services)

Approved for above and below ground applications but requires approval from local inspector prior to installation due to codes and soil conditions.

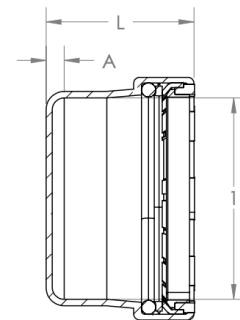
- Hot and cold potable water
- Rainwater/Gray water
- Chilled water
- Residential steam (5 psi maximum)
- Hydronic heating (≤50% ethylene / propylene glycol)

### Listings & Certificates

- IAPMO Listed for IAPMO/ANSI Z1117, NSF/ANSI 61/372
- ICC-ES Evaluated to ICC-ES LC1002
- Commonwealth of Massachusetts (Plumbing)

### Compliant with:

- ASTM B88
- ASTM D2000



### Dimensional Data

Part No.	Size (P)		
	1	A	L
SPWEC7R	2-1/2	0.24	1.93
SPWEC8R	3	0.24	2.20
SPWEC9R	4	0.30	2.52

Fitting Size	Pipe Insertion Depth
2-1/2"	1-3/4"
3"	2-3/16"
4"	2-3/8"

Item # Submitted	
Job Name	
Date	
Engineer	
Contractor	
PO #	
Tag	



QuickFitting® SurePress® is line of press fittings that visually confirms a pressed connection. Green indication fills windows once pressed, confirming a successful seal. This allows installers and inspectors to quickly identify if a fitting has been pressed prior to pressure testing.

### Features and Benefits

- SurePress® Technology: PRESS-GREEN-GO
- Green indication in windows confirms a pressed connection
- Visible indication up to 5 ft. away
- Quickly identify if fittings are pressed prior to pressure testing
- Lead free materials - safe for potable water
- No heat, flame or Hot Work Permit needed to install
- Compatible with all leading brand hydraulic press tools and jaws
- Limited Lifetime Warranty

### Materials

- Body Construction: Copper
- O-Ring: EPDM (Black)
- Indicator Ring: EPDM (Green)
- Grip Ring: 301 Stainless Steel
- Plate Gasket: Nylon
- Guard Ring: Nylon

### Performance

- Operating Pressure (Max): 300 psi
- Test/Burst Pressure (Max): 600 psi
- Operating Temperature: 0°F - 250°F

### Pipe Compatibility

- ASTM B88 compliant Type K, L, M copper tubing
  - Hard copper: Nominal sizes 2-1/2" to 4"

### Approved Applications (Services)

Approved for above and below ground applications but requires approval from local inspector prior to installation due to codes and soil conditions.

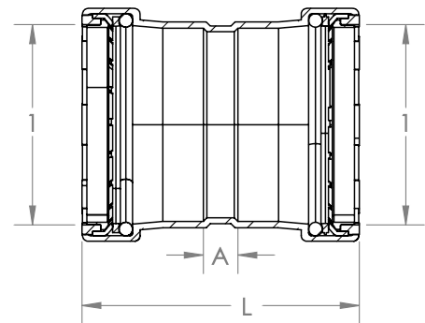
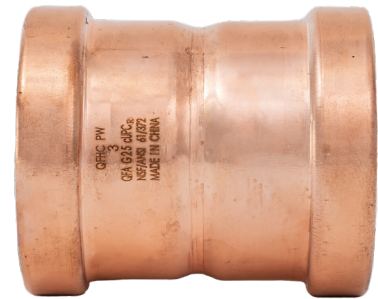
- Hot and cold potable water
- Rainwater/Gray water
- Chilled water
- Residential steam (5 psi maximum)
- Hydronic heating (≤50% ethylene / propylene glycol)

### Listings & Certificates

- IAPMO Listed for IAPMO/ANSI Z1117, NSF/ANSI 61/372
- ICC-ES Evaluated to ICC-ES LC1002
- Commonwealth of Massachusetts (Plumbing)

### Compliant with:

- ASTM B88
- ASTM D2000



### Dimensional Data

Part No.	Size (P x P)			
	1	1	A	L
SPWC77R	2-1/2	2-1/2	0.47	3.79
SPWC88R	3	3	0.47	4.33
SPWC99R	4	4	0.59	5.12

Fitting Size	Pipe Insertion Depth
2-1/2"	1-3/4"
3"	2-3/16"
4"	2-3/8"

Item # Submitted	
Job Name	
Date	
Engineer	
Contractor	
PO #	
Tag	



QuickFitting® SurePress® is line of press fittings that visually confirms a pressed connection. Green indication fills windows once pressed, confirming a successful seal. This allows installers and inspectors to quickly identify if a fitting has been pressed prior to pressure testing.

### Features and Benefits

- SurePress® Technology: PRESS-GREEN-GO
- Green indication in windows confirms a pressed connection
- Visible indication up to 5 ft. away
- Quickly identify if fittings are pressed prior to pressure testing
- Lead free materials - safe for potable water
- No heat, flame or Hot Work Permit needed to install
- Compatible with all leading brand hydraulic press tools and jaws
- Limited Lifetime Warranty

### Materials

- Body Construction: Copper
- O-Ring: EPDM (Black)
- Indicator Ring: EPDM (Green)
- Grip Ring: 301 Stainless Steel
- Plate Gasket: Nylon
- Guard Ring: Nylon

### Performance

- Operating Pressure (Max): 300 psi
- Test/Burst Pressure (Max): 600 psi
- Operating Temperature: 0°F - 250°F

### Pipe Compatibility

- ASTM B88 compliant Type K, L, M copper tubing
  - Hard copper: Nominal sizes 2-1/2" to 4"

### Approved Applications (Services)

Approved for above and below ground applications but requires approval from local inspector prior to installation due to codes and soil conditions.

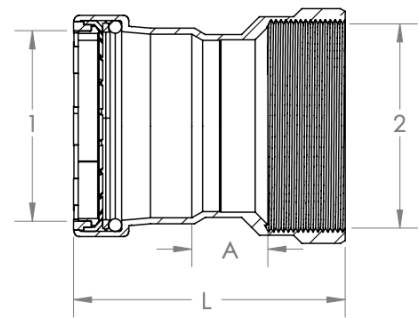
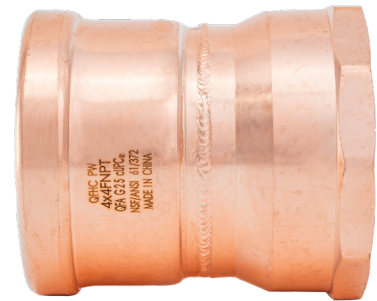
- Hot and cold potable water
- Rainwater/Gray water
- Chilled water
- Residential steam (5 psi maximum)
- Hydronic heating (≤50% ethylene / propylene glycol)

### Listings & Certificates

- IAPMO Listed for IAPMO/ANSI Z1117, NSF/ANSI 61/372
- ICC-ES Evaluated to ICC-ES LC1002
- Commonwealth of Massachusetts (Plumbing)

### Compliant with:

- ASTM B88
- ASTM D2000
- ASME B1.20.1



### Dimensional Data

Part No.	Size (P x FNPT)			
	1	2	A	L
SPWF77R	2-1/2	2-1/2	1.09	3.90
SPWF88R	3	3	1.34	4.65
SPWF99R	4	4	1.75	5.51

Fitting Size	Pipe Insertion Depth
2-1/2"	1-3/4"
3"	2-3/16"
4"	2-3/8"

Item # Submitted	
Job Name	
Date	
Engineer	
Contractor	
PO #	
Tag	

D25

QuickFitting® SurePress® is line of press fittings that visually confirms a pressed connection. Green indication fills windows once pressed, confirming a successful seal. This allows installers and inspectors to quickly identify if a fitting has been pressed prior to pressure testing.

### Features and Benefits

- SurePress® Technology: PRESS-GREEN-GO
- Green indication in windows confirms a pressed connection
- Visible indication up to 5 ft. away
- Quickly identify if fittings are pressed prior to pressure testing
- Lead free materials - safe for potable water
- No heat, flame or Hot Work Permit needed to install
- Compatible with all leading brand hydraulic press tools and jaws
- Limited Lifetime Warranty

### Materials

- Body Construction: Copper
- O-Ring: EPDM (Black)
- Indicator Ring: EPDM (Green)
- Grip Ring: 301 Stainless Steel
- Plate Gasket: Nylon
- Guard Ring: Nylon

### Performance

- Operating Pressure (Max): 300 psi
- Test/Burst Pressure (Max): 600 psi
- Operating Temperature: 0°F - 250°F

### Pipe Compatibility

- ASTM B88 compliant Type K, L, M copper tubing
  - Hard copper: Nominal sizes 2-1/2" to 4"

### Approved Applications (Services)

Approved for above and below ground applications but requires approval from local inspector prior to installation due to codes and soil conditions.

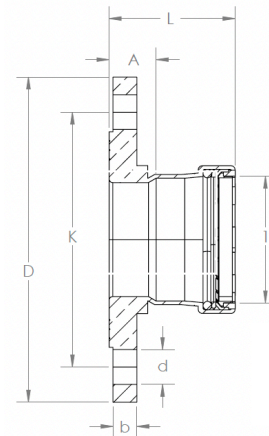
- Hot and cold potable water
- Rainwater/Gray water
- Chilled water
- Residential steam (5 psi maximum)
- Hydronic heating (≤50% ethylene / propylene glycol)

### Listings & Certificates

- IAPMO Listed for IAPMO/ANSI Z1117, NSF/ANSI 61/372
- ICC-ES Evaluated to ICC-ES LC1002
- Commonwealth of Massachusetts (Plumbing)

### Compliant with:

- ASTM B88
- ASTM D2000
- ASME B16.18
- ASME B16.22



### Dimensional Data

Part No.	Size (P)						
	1	A	L	b	K	D	d
SPWFL7R	2-1/2	1.01	2.70	0.51	5.49	7.01	0.75
SPWFL8R	3	0.88	2.90	0.51	6.00	7.44	0.75
SPWFL9R	4	1.11	3.41	0.63	7.50	9.02	0.75

Fitting Size	Pipe Insertion Depth
2-1/2"	1-3/4"
3"	2-3/16"
4"	2-3/8"

Item # Submitted	
Job Name	
Date	
Engineer	
Contractor	
PO #	
Tag	

D25

QuickFitting® SurePress® is line of press fittings that visually confirms a pressed connection. Green indication fills windows once pressed, confirming a successful seal. This allows installers and inspectors to quickly identify if a fitting has been pressed prior to pressure testing.

**Features and Benefits**

- SurePress® Technology: PRESS-GREEN-GO
- Green indication in windows confirms a pressed connection
- Visible indication up to 5 ft. away
- Quickly identify if fittings are pressed prior to pressure testing
- Lead free materials - safe for potable water
- No heat, flame or Hot Work Permit needed to install
- Compatible with all leading brand hydraulic press tools and jaws
- Limited Lifetime Warranty

**Materials**

- Body Construction: Copper
- O-Ring: EPDM (Black)
- Indicator Ring: EPDM (Green)
- Grip Ring: 301 Stainless Steel
- Plate Gasket: Nylon
- Guard Ring: Nylon

**Performance**

- Operating Pressure (Max): 300 psi
- Test/Burst Pressure (Max): 600 psi
- Operating Temperature: 0°F - 250°F

**Pipe Compatibility**

- ASTM B88 compliant Type K, L, M copper tubing
  - Hard copper: Nominal sizes 2-1/2" to 4"

**Approved Applications (Services)**

Approved for above and below ground applications but requires approval from local inspector prior to installation due to codes and soil conditions.

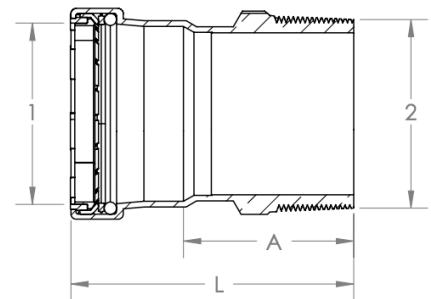
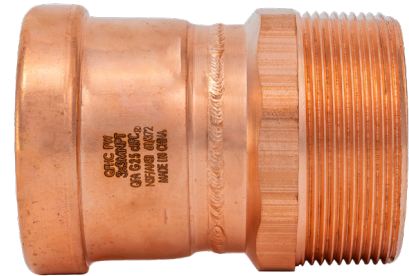
- Hot and cold potable water
- Rainwater/Gray water
- Chilled water
- Residential steam (5 psi maximum)
- Hydronic heating (≤50% ethylene / propylene glycol)

**Listings & Certificates**

- IAPMO Listed for IAPMO/ANSI Z1117, NSF/ANSI 61/372
- ICC-ES Evaluated to ICC-ES LC1002
- Commonwealth of Massachusetts (Plumbing)

**Compliant with:**

- ASTM B88
- ASTM D2000
- ASME B1.20.1



**Dimensional Data**

Part No.	Size (P x MNPT)			
	1	2	A	L
SPWM77R	2-1/2	2-1/2	2.56	4.25
SPWM88R	3	3	3.56	5.51
SPWM99R	4	4	3.25	5.51

Fitting Size	Pipe Insertion Depth
2-1/2"	1-3/4"
3"	2-3/16"
4"	2-3/8"

Item # Submitted	
Job Name	
Date	
Engineer	
Contractor	
PO #	
Tag	

QuickFitting® SurePress® is line of press fittings that visually confirms a pressed connection. Green indication fills windows once pressed, confirming a successful seal. This allows installers and inspectors to quickly identify if a fitting has been pressed prior to pressure testing.

### Features and Benefits

- SurePress® Technology: PRESS-GREEN-GO
- Green indication in windows confirms a pressed connection
- Visible indication up to 5 ft. away
- Quickly identify if fittings are pressed prior to pressure testing
- Lead free materials - safe for potable water
- No heat, flame or Hot Work Permit needed to install
- Compatible with all leading brand hydraulic press tools and jaws
- Limited Lifetime Warranty

### Materials

- Body Construction: Copper
- O-Ring: EPDM (Black)
- Indicator Ring: EPDM (Green)
- Grip Ring: 301 Stainless Steel
- Plate Gasket: Nylon
- Guard Ring: Nylon

### Performance

- Operating Pressure (Max): 300 psi
- Test/Burst Pressure (Max): 600 psi
- Operating Temperature: 0°F - 250°F

### Pipe Compatibility

- ASTM B88 compliant Type K, L, M copper tubing
  - Hard copper: Nominal sizes 2-1/2" to 4"

### Approved Applications (Services)

Approved for above and below ground applications but requires approval from local inspector prior to installation due to codes and soil conditions.

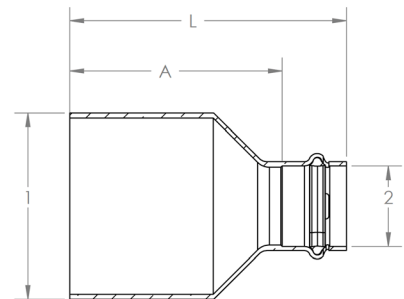
- Hot and cold potable water
- Rainwater/Gray water
- Chilled water
- Residential steam (5 psi maximum)
- Hydronic heating (≤50% ethylene / propylene glycol)

### Listings & Certificates

- IAPMO Listed for IAPMO/ANSI Z1117, NSF/ANSI 61/372
- ICC-ES Evaluated to ICC-ES LC1002
- Commonwealth of Massachusetts (Plumbing)

### Compliant with:

- ASTM B88
- ASTM D2000
- ASME B16.18
- ASME B16.22



### Dimensional Data

Part No.	Size (FTG x P)			
	1	2	A	L
SPWRC73-STR	2-1/2	1	2.99	3.90
SPWRC75-STR	2-1/2	1-1/2	2.72	4.02
SPWRC76-STR	2-1/2	2	2.52	4.09
SPWRC85-STR	3	1-1/2	3.31	4.61
SPWRC86-STR	3	2	3.11	4.69

Fitting Size	Pipe Insertion Depth
2-1/2"	1-3/4"
3"	2-3/16"
4"	2-3/8"

Item # Submitted	
Job Name	
Date	
Engineer	
Contractor	
PO #	
Tag	

QuickFitting® SurePress® is line of press fittings that visually confirms a pressed connection. Green indication fills windows once pressed, confirming a successful seal. This allows installers and inspectors to quickly identify if a fitting has been pressed prior to pressure testing.

### Features and Benefits

- SurePress® Technology: PRESS-GREEN-GO
- Green indication in windows confirms a pressed connection
- Visible indication up to 5 ft. away
- Quickly identify if fittings are pressed prior to pressure testing
- Lead free materials - safe for potable water
- No heat, flame or Hot Work Permit needed to install
- Compatible with all leading brand hydraulic press tools and jaws
- Limited Lifetime Warranty

### Materials

- Body Construction: Copper
- O-Ring: EPDM (Black)
- Indicator Ring: EPDM (Green)
- Grip Ring: 301 Stainless Steel
- Plate Gasket: Nylon
- Guard Ring: Nylon

### Performance

- Operating Pressure (Max): 300 psi
- Test/Burst Pressure (Max): 600 psi
- Operating Temperature: 0°F - 250°F

### Pipe Compatibility

- ASTM B88 compliant Type K, L, M copper tubing
  - Hard copper: Nominal sizes 2-1/2" to 4"

### Approved Applications (Services)

Approved for above and below ground applications but requires approval from local inspector prior to installation due to codes and soil conditions.

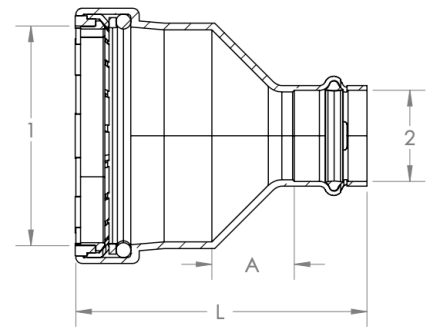
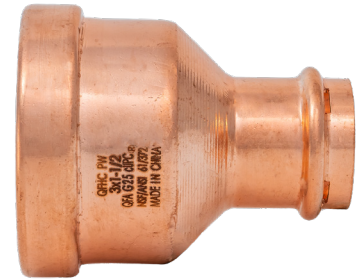
- Hot and cold potable water
- Rainwater/Gray water
- Chilled water
- Residential steam (5 psi maximum)
- Hydronic heating (≤50% ethylene / propylene glycol)

### Listings & Certificates

- IAPMO Listed for IAPMO/ANSI Z1117, NSF/ANSI 61/372
- ICC-ES Evaluated to ICC-ES LC1002
- Commonwealth of Massachusetts (Plumbing)

### Compliant with:

- ASTM B88
- ASTM D2000



### Dimensional Data

Part No.	Size (P x P)			
	1	2	A	L
SPWRC73R	2-1/2	1	1.02	3.62
SPWRC74R	2-1/2	1-1/4	2.05	3.74
SPWRC75R	2-1/2	1-1/2	2.05	3.74
SPWRC85R	3	1-1/2	2.42	4.37
SPWRC86R	3	2	2.46	4.41

Fitting Size	Pipe Insertion Depth
2-1/2"	1-3/4"
3"	2-3/16"
4"	2-3/8"

Item # Submitted	
Job Name	
Date	
Engineer	
Contractor	
PO #	
Tag	

D25

QuickFitting® SurePress® is line of press fittings that visually confirms a pressed connection. Green indication fills windows once pressed, confirming a successful seal. This allows installers and inspectors to quickly identify if a fitting has been pressed prior to pressure testing.

### Features and Benefits

- SurePress® Technology: PRESS-GREEN-GO
- Green indication in windows confirms a pressed connection
- Visible indication up to 5 ft. away
- Quickly identify if fittings are pressed prior to pressure testing
- Lead free materials - safe for potable water
- No heat, flame or Hot Work Permit needed to install
- Compatible with all leading brand hydraulic press tools and jaws
- Limited Lifetime Warranty

### Materials

- Body Construction: Copper
- O-Ring: EPDM (Black)
- Indicator Ring: EPDM (Green)
- Grip Ring: 301 Stainless Steel
- Plate Gasket: Nylon
- Guard Ring: Nylon

### Performance

- Operating Pressure (Max): 300 psi
- Test/Burst Pressure (Max): 600 psi
- Operating Temperature: 0°F - 250°F

### Pipe Compatibility

- ASTM B88 compliant Type K, L, M copper tubing
  - Hard copper: Nominal sizes 2-1/2" to 4"

### Approved Applications (Services)

Approved for above and below ground applications but requires approval from local inspector prior to installation due to codes and soil conditions.

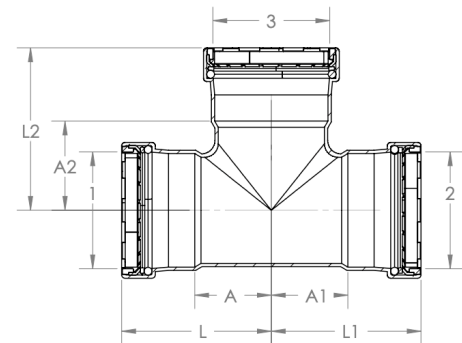
- Hot and cold potable water
- Rainwater/Gray water
- Chilled water
- Residential steam (5 psi maximum)
- Hydronic heating (≤50% ethylene / propylene glycol)

### Listings & Certificates

- IAPMO Listed for IAPMO/ANSI Z1117, NSF/ANSI 61/372
- ICC-ES Evaluated to ICC-ES LC1002
- Commonwealth of Massachusetts (Plumbing)

### Compliant with:

- ASTM B88
- ASTM D2000



### Dimensional Data

Part No.	Size (P x P x P)								
	1	2	3	A	A1	A2	L	L1	L2
SPWT776R	2-1/2	2-1/2	2	1.42	1.42	3.06	3.03	3.03	4.64
SPWT777R	2-1/2	2-1/2	2-1/2	1.79	1.79	2.10	3.50	3.50	3.80
SPWT886R	3	3	2	1.41	1.41	3.37	3.31	3.31	4.95
SPWT888R	3	3	3	1.95	1.95	2.44	3.94	3.94	4.43
SPWT996R	4	4	2	1.51	1.51	3.84	3.68	3.68	5.41
SPWT999R	4	4	4	2.61	2.61	2.95	4.92	4.92	5.25

Fitting Size	Pipe Insertion Depth
2-1/2"	1-3/4"
3"	2-3/16"
4"	2-3/8"

Item # Submitted	
Job Name	
Date	
Engineer	
Contractor	
PO #	
Tag	

